

Mandatory Disclosure

Infrastructure

CHRIST has adequate, state-of-the-art physical infrastructure facilities for enabling an effective teaching learning process for its faculty and students. The University constantly upgrades itself with current trends in educational infrastructure to meet the needs of the times, while maintaining the statutory requirements of regulatory bodies like UGC, AICTE, BCI, NCTE, COA etc.

Campus Type	Address	Campus Area in Acres	Built-up Area in sq. mts
Main Campus	CHRIST (Deemed to be University), Dharmaram College Post, Hosur Road, Bengaluru	148.17	353304
Off Campus	Mariam Nagar, Meerut Road, Ghaziabad, Delhi NCR - 201003	5.71	29910
Off Campus	Valor Court, Dasve Lavasa, Mulshi - 412112	28	16700

CHRIST has 494 ICT enabled, spacious classrooms with well-designed furniture to accommodate its students in all its campuses. Classroom sizes follow the norms of statutory bodies. 26 Seminar halls with ICT facilities, including Smart boards and smart rooms for interactive presentations, are available. For mega conferences, 10 spacious auditoriums with state-of-the-art acoustics exist in all the campuses, equipped with the latest A/V technology.

The Main auditorium in Bangalore Central Campus has a seating capacity for 2000 attendees. The School of Law has Moot Courts for simulation of cases leading to pleading, drafting and developing arguments. Students of Performing Arts and Western Classical Music have practice rooms for Dance and Music. School of Architecture enhances student learning using the Design Studio and Rural Studio facilities.



Laboratories

Excellent domain-specific laboratories, with modern equipment to facilitate experiential learning and research by the UG, PG and PhD students, are available in all the campuses.

Disciplines	Laboratory
Life Sciences	Undergraduate and Postgraduate Labs; Research labs with advanced facilities like Flame Atomic absorption spectroscopy, gas chromatography mass spectrometer, FTIR spectroscopy, High Performance Liquid Chromatography.
Chemistry	Undergraduate and Postgraduate Labs; Research labs with modern facilities like Gas Chromatography, Electrochemical workstation, UV/VIS spectrophotometer, Fluorescence Spectrofluorophotometer, Optical Profilometer, TGA/DSC, FTIR etc.
Physics	Material Science Labs - 3 nos.; Undergraduate and Postgraduate Labs; Astrophysics Lab; Wind and Solar hybrid power generation system -NAL CSIR; Common Instrumentation Lab - Scanning Electron Microscope (SEM) with EDS, X-Ray, Diffractometer; Raman Spectrometer.
Psychology	Psychology Neurocognition lab, Child Development Lab, Behaviour Decision Lab, Mindfulness Lab, Cognition- Affect-Behaviour Lab (CAB), Functional -Near InfraRed, Spectroscopy Lab (f-NIRS), Clinical Training and Assessment Lab.
Engineering	Seventy five specialised labs including Machine Learning Labs, High Performance Computing Lab, CISCO Networking Lab, Alternative Fuel Engine Lab, Material Testing Lab, Concrete Technology Hydraulics & Hydraulic Machinery Lab, Computer Aided Design and Drafting Lab, Geotechnical Engineering Lab, E-Mobility, Operations Labs, Communication Labs, Digital Signal Processing Lab, and Material Lab.
Media Studies	A/V Recording capabilities with Teleprompter, Cameras, Sound console and Editing softwares for developing multimedia content.
Business and Management & Commerce Accountancy and Finance	Business Labs, Bloomberg Labs, Commerce Labs, Marketing Lab (MBA).
Language/Education	Language/ Education Language lab
Mathematics	Mathematics Labs for Python, FOSS tools, MATLAB.
Law	Moot court
Computer Science	Data Analytics Lab

BANGALORE CAMPUS – LOCATION HOSUR ROAD



4th Block - 1 Basement - Basic Training Kitchen



4th Block - 1st Floor - Language Lab



Central Block - 2nd Floor - IBM Business Analytics Lab



Central Block - 8th Floor - MCA Computer Lab



4th Block – BHM Live Restaurant

DELHI NCR OFF CAMPUS



Block B - 1st Floor - 107 - Psychology Lab

BANGALORE CAMPUS – LOCATION KENGERI



5th Block - Ground Floor - MBRDI Lab



4th Block - Basement - Metal Cutting and Production Lab



3rd Block - Basement - High voltage lab



1st Block - 2nd Floor - Finance Lab

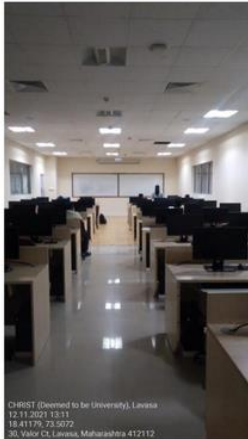


2nd Block - 2nd Floor - Device and System Communication lab



5th Block - Ground Floor - Advanced Machining Lab

BANGALORE CAMPUS – LOCATION KENGERI



Main Block - 1st Floor - Computer Labs

BANGALORE CAMPUS – LOCATION HOSUR ROAD



2nd Block -3rd Floor - Plant Tissue Culture Lab



1st Block - 1st Floor - Electronics Lab



2nd Block - 3rd Floor -Applied and Industrial Biotechnology Lab



2nd Block - 3rd Floor - MSc Life Sciences Lab1



2nd Block - 3rd Floor - Microbiology lab



2nd Block - 3rd Floor - OOTE Lab

Computing Equipment

Across all campuses about 3600 Computers are available for academic and administrative purposes with a student to computer ratio of 8:1. Built up area per student is 16 square feet. Forty Two fully equipped Computer labs are open for students and teachers. Moodle and Google LMSs are used by faculty for effective classroom management. During the pandemic, platforms like WebEx, Mercer|Mettl, Zoom and Microsoft Teams were provided to teachers and students for ensuring a seamless online teaching-learning process.



LOCATION BANNERGHATTA ROAD - 6th Floor



LOCATION HOSUR ROAD- 2nd Block - 1st Floor



LOCATION HOSUR ROAD- 2nd Block - 3rd Floor



DELHI NCR OFF CAMPUS - Block A - 1st Floor



DELHI NCR OFF CAMPUS - Block A - 3rd Floor

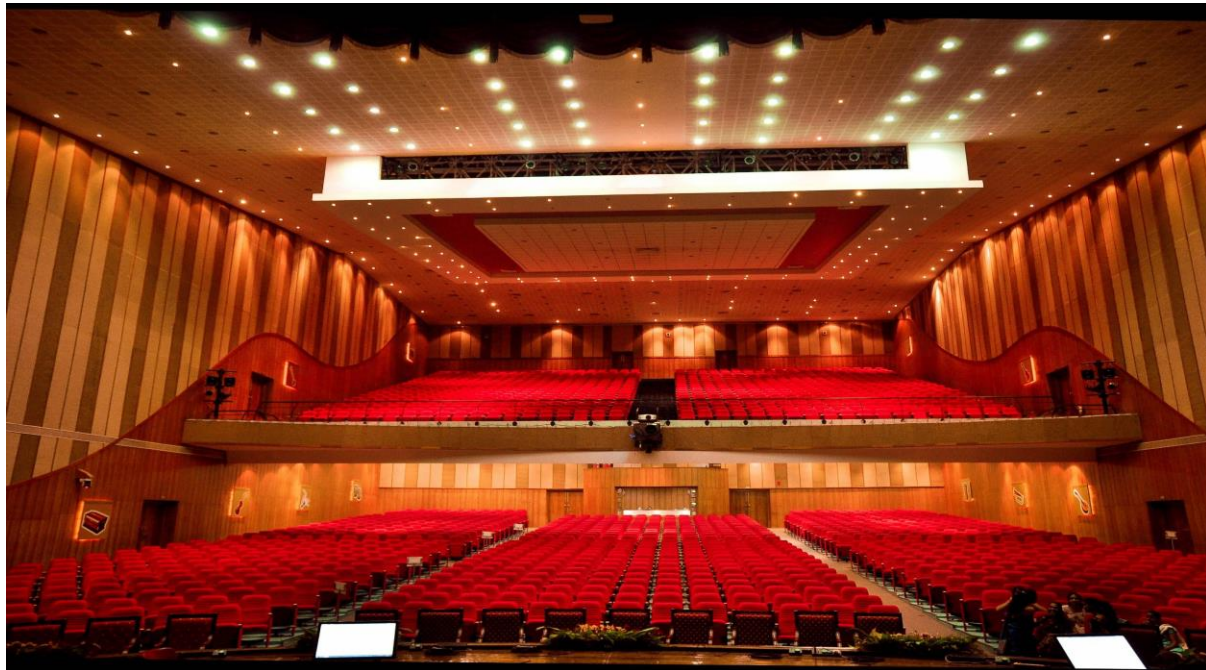


DELHI NCR OFF CAMPUS - Block B - 1st Floor

Facilities for Cultural Activities

The University has five main auditoriums, three in Bangalore campuses and one each in off campuses, with a total seating capacity of 7000 with facility to project cultural and academic events using the latest audio-visual equipment. In addition to this, the University has 10 mini Auditoriums, 2 Amphitheatres / Open-air theatres, 3 Music Rooms, 1 Music Studio, 5 Jam Rooms and Choir Rooms, and 3 Dance Rooms as facilities for cultural activities. Under the guidance of the Student Welfare Office, the University

conducts cultural activities and programmes like Ethnic Day, Talent search competition-Darpan, inter-class cultural fest-Blossoms and inter-college cultural fest-In Bloom. Alongside, many academic departments host cultural fests for their students.



BANGALORE CAMPUS – LOCATION BANNERGHATTA ROAD





BANGALORE CAMPUS – LOCATION HOSUR ROAD



BANGALORE CAMPUS – LOCATION HOSUR ROAD



DELHI NCR OFF CAMPUS



PUNE LAVASA OFF CAMPUS



DELHI NCR OFF CAMPUS



BANGALORE CAMPUS - LOCATION KENGERI







Facilities for Yoga

To promote physical and mental wellbeing, the University conducts Yoga sessions in all the campuses using common facilities including the Campus view of the Central Block, open theatre area in Block I in Bangalore Central Campus, indoor sports area and gymnasium in Lavasa and NCR Campus, Open Air Theatre on Kengeri campus and the Open Area in front of Main Block, BGR Campus. International Yoga Day is also celebrated every year with participation of students and staff, in association with the NCC and Physical Education Department.



Facilities for Sports and Games

Physical recreation through games and sports has been an important part of CHRIST since its inception. The students of the university use the indoor and outdoor facilities to excel in sports and games bringing home various trophies and recognitions. National, Regional and State level tournaments are organized throughout the year on all campuses.

For outdoor and indoor sports and games, the University has 7 Football Grounds, 2 Hockey Fields, 3 Throwball courts, 5 Volleyball courts, 12 Basketball courts, 2 Tennis courts, 5 Cricket grounds and Nets, 1 Kabbadi courts, 1 Kho-Kho court, 9 Badminton courts, 4 Track & Field/ Athletics grounds, 6 Table Tennis Tables, 7 Gymnasiums and Fitness Centres. In addition to this Indoor facilities are available for various games including Chess, FoosBall, Pool, Carroms, Table Tennis etc.

The Gymnasium and Health & Fitness Centres are armed with fitness and workout equipment and supervised by a trainer. The campus also has Gymnasium table tennis and basketball court for students this facility can be availed by students during the lunch hours and after the college hours. The gymnasium is covered under AMC and serviced every month.



PUNE LAVASA OFF CAMPUS

BANGALORE CAMPUS – LOCATION HOSUR ROAD





DELHI NCR OFF CAMPUS



BANGALORE CAMPUS – LOCATION HOSUR ROAD



BANGALORE CAMPUS – LOCATION BANNERGHATTA ROAD



BANGALORE CAMPUS – LOCATION HOSUR ROAD



PUNE LAVASA OFF CAMPUS



BANGALORE CAMPUS – LOCATION HOSUR ROAD



DELHI NCR OFF CAMPUS



BANGALORE CAMPUS – LOCATION HOSUR ROAD



BANGALORE CAMPUS – LOCATION KENGERI



BANGALORE CAMPUS – LOCATION KENGERI



PUNE LAVASA OFF CAMPUS



BANGALORE CAMPUS – LOCATION HOSUR ROAD



Availability of general campus facilities and overall ambience

CHRIST campuses are hailed by civic authorities for their aesthetic landscapes, preservation of flora and fauna and sustainable green initiatives of reducing, recycling and recharging through its Recycling units. The tree shaded, well-laid pathways, flower gardens and serene atmosphere makes for a conducive environment for all educational and co-curricular activities.





BANGALORE CAMPUS – LOCATION HOSUR ROAD



Dining and Refreshments

To cater to the needs of its multicultural population, the campuses have over 22 multi-cuisine cafeterias and kiosks serving vegetarian and non-vegetarian food. Hospitality, hygiene, nutrition and affordability are the USPs of all these eateries. Food vending machines are placed at different points in the campuses.



BANGALORE CAMPUS – LOCATION HOSUR ROAD



DELHI NCR OFF CAMPUS



Meeting Spaces

Informal meeting spaces are aplenty on the campuses. Stationery shops and reprographic facilities are also located in these spaces. Formal meeting rooms and board rooms are also present with multimedia presentation and Wi-Fi facilities. Common rooms for ladies are present in all campuses.



BANGALORE CAMPUS – LOCATION HOSUR ROAD

BANGALORE CAMPUS – LOCATION KENGERI



Student Halls and Guest Houses

Student Halls (Hostels) for Men and Women are provided on all campuses with single, double and triple sharing modern facilities with internet connectivity. Solar Panels are available for water heating on roof tops. Multiple guest rooms and suite rooms with modern amenities are also available to accommodate guests.





Banking

For banking, branches of South Indian Bank and Catholic Syrian Bank with multiple ATMs are present on the campuses. The University in collaboration with South Indian Bank has provided a debit cum Identity card and online banking facilities for all students, faculty and staff.

BANGALORE CAMPUS – LOCATION HOSUR ROAD



BANGALORE CAMPUS – LOCATION KENGERI



Divyangjan Friendly Facilities

Ramps and lifts are present in all the buildings for movement of students and faculty to different levels of the multi-storeyed buildings. All floors in the buildings have Divyangjan friendly restrooms fitted with sensor enabled flushing and hand dryers. Wheelchairs are made available to aid the mobility of physical challenges in the campus and buildings.

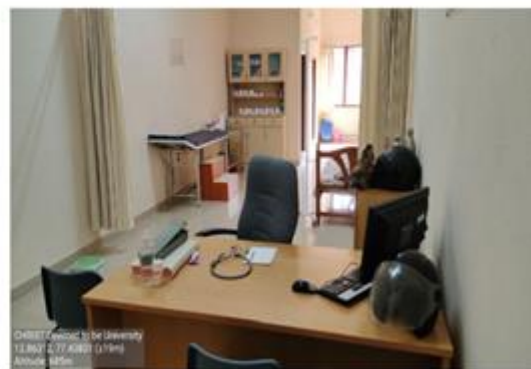
Health Care Facilities

Health Centres with beds and essential medicines and doctors and nurses are available on all campuses. The University has 2 ambulances that are available in case of emergencies with links to nearby hospitals. Sanitary napkin dispensers are placed at different points in the campuses.

Delhi NCR OFF CAMPUS



BANGALORE CAMPUS – LOCATION KENGERI



BANGALORE CAMPUS – LOCATION HOSUR ROAD



Transport Facilities

The University provides a total of 23 buses for students and faculty for intracity / inter campus travel. Battery operated buggies are provided for visitors to move within the campus.

PUNE LAVASA OFF CAMPUS



PUNE LAVASA OFF CAMPUS



DELHI NCR OFF CAMPUS



Parking Facilities

Two wheeler, Four Wheeler and Bicycle Parking facilities for faculty, staff and students are provided in all the campuses.

BANGALORE CAMPUS – LOCATION HOSUR ROAD



BANGALORE CAMPUS – LOCATION BANNERGHATTA



BANGALORE CAMPUS – LOCATION KENGERI



PUNE LAVASA OFF CAMPUS



Safety and Security

The security personnel, working round the clock, have their own offices and separate accommodation quarters. CCTV cameras placed throughout the campus are monitored from the Security Office.

Fire safety equipment like smoke detectors, alarms and extinguishers are available on all the building floors.

Miscellaneous Facilities

Drinking water dispensers are available on all floors in all buildings. Pigeon-hole message boxes in sign-in rooms are available for staff. Green rooms are available near auditoriums for stage performers. The Department of Physical Education has locker rooms, dormitories and showering facilities for athletes.

BANGALORE CAMPUS – LOCATION HOSUR ROAD



BANGALORE CAMPUS – LOCATION KENGERI

BANGALORE CAMPUS – LOCATION BANNERGHATTA ROAD



BANGALORE CAMPUS – LOCATION HOSUR ROAD



Library as a Learning Resource

Library is automated using Integrated Library Management System (ILMS) and has digitisation facility

CHRIST (Deemed to be University) has consistently invested in upgrading and digitisation of the library facility over the years, keeping the regulatory guidelines mandated by AICTE, UGC and other apex bodies.

The students and staff of CHRIST have access to Six libraries. They are:

Bangalore Central Campus: The Knowledge Centre and the Under-Graduate Library

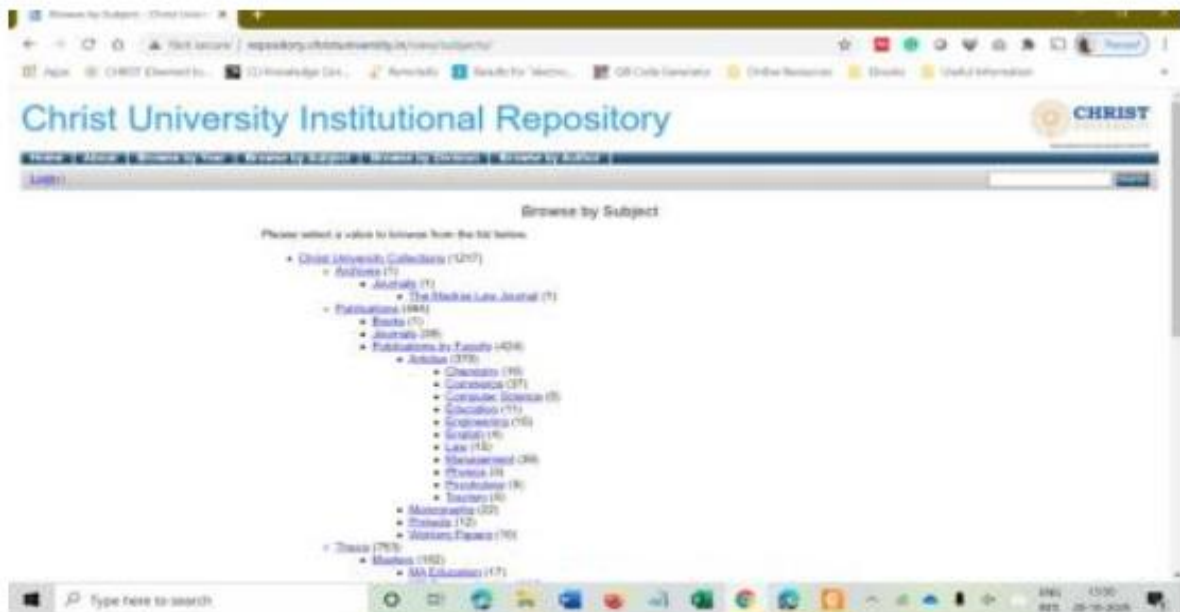
- Bangalore Bannerghatta Location Library
- Bangalore Kengeri Location Library
- Pune-Lavasa Campus Library
- Delhi-NCR Campus Library

The library has a total collection of 3,32,896 books (1,90,872 titles) and subscribes to 658 periodicals and 23 newspapers in 7 languages. The library follows an Open Access policy. The books could be used for reference or be borrowed. The library has a membership with

other Institutional libraries. The membership cards are available at the library circulation desk.



Application of KOHA and Barcode Technology in Circulation



Institutional Repository Home page



Summons, Discovery Service - Search Page

Automation

The Biometric gates are used to monitor patron check-in and check-out. The University ID Card is scanned at the entry and exit point each time a user uses the library. The data is linked to the ERP and is used to generate electronic attendance of library usage. To prevent the loss of library materials, the libraries have installed Electromagnetic (EM) gates from 3M Technologies at the check-out points, in addition to upgradation of CCTV cameras at strategic points.



Biometric Access Gates



Check-In/ Check-Out by Scanning ID Card

Library Management System

CHRIST Central Library began the process of automation in 1999, with Barcode technology for processing and circulation of Print resources.

It was upgraded to a fully automated process using Integrated Library Management System KOHA, installed and operated since 2009. The following activities are performed using KOHA:

- Data Entry of items purchased (Accession Register)
- Circulation of Books
- Serials Maintenance
- Stock Verification
- Online Public Access Catalogue (OPAC) accessible 24X7
- A user account for all students and faculty to check their library account
- SMS and email facility for all library transaction
- Remote access to library databases for students and faculty

The library uses Knimbus eLibrary portal, which provides all the resources available through the library on any device from anywhere.

Digitisation

The users of the library have access to many services such as reprographics, printing, and scanning. The Library has the facility for digitisation of manuscripts. Reprographic services are available in all the libraries for students and faculty. The library has scanned rare books and has made it available internally through its digital repository.

The library facilities include ample reading space, discussion rooms, property counters, OPAC, and Digiworld.

The Digital Repository is updated regularly with Thesis and Dissertations, and Faculty Publications. At present, the Digital Repository has 1214 items.

Institution has the following Facilities for e-content development

1. Media centre

Media Centres



BANGALORE CAMPUS - Central Block - 10th Floor - Green View Studio



BANGALORE CAMPUS KENGERI - 1st Block - Ground Floor



PUNE LAVASA OFF CAMPUS - Main Block - 2nd Floor



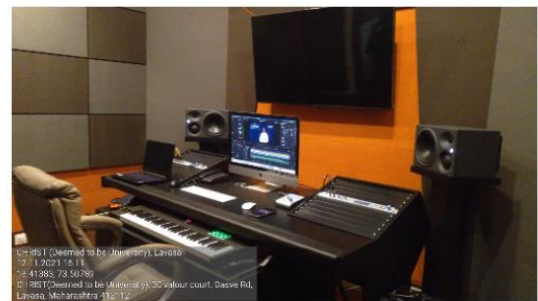
DELHI NCR OFF CAMPUS - Block B - 1st Floor

2. Audio visual centre

Audio Visual Centres



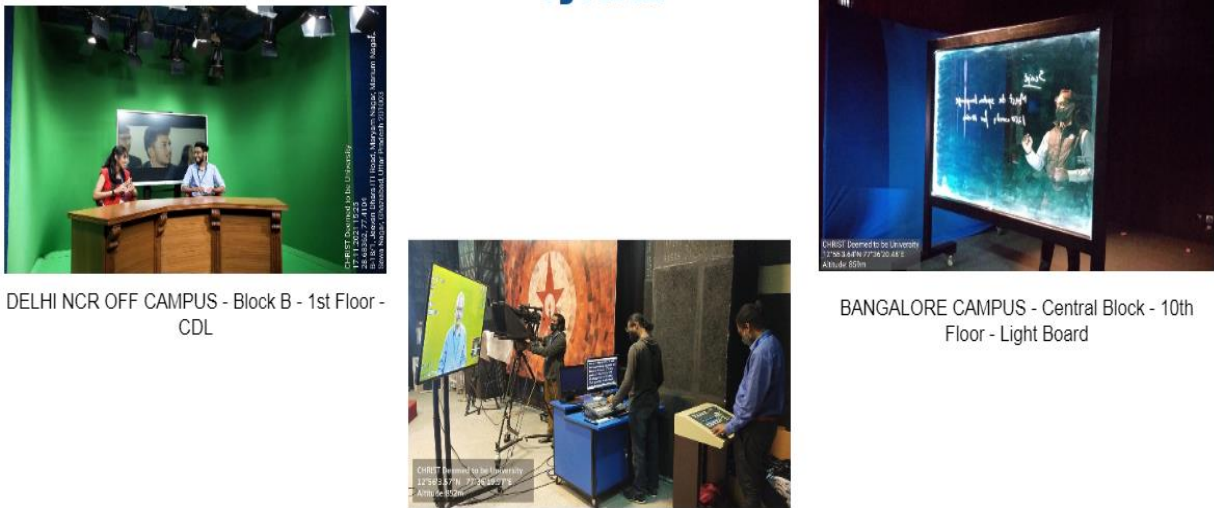
BANGALORE CAMPUS - Central Block - 10th Floor - Green View Studio



PUNE LAVASA OFF CAMPUS - Main Block - 2nd Floor

3. Lecture Capturing System(LCS)

Lecture Capturing System



DELHI NCR OFF CAMPUS - Block B - 1st Floor - CDL

BANGALORE CAMPUS - Central Block - 10th Floor - Light Board

BANGALORE CAMPUS - Central Block - 10th Floor

4. Mixing equipments and softwares for editing

Mixing equipment and software for editing



BANGALORE CAMPUS - Central Block - 10th Floor - Light Mixer

BANGALORE CAMPUS - Central Block - 10th Floor - Editing Equipment

DELHI NCR OFF CAMPUS - Block B - 1st Floor - Audio Editing Equipment

PUNE LAVASA OFF CAMPUS - Main Block - 2nd Floor - Audio Video Editing Suite